

# This, that, here, there

Hello again,

In this lesson we will learn the difference between **This, that, here and there!**

We will learn how to recognizing the connection between '*this, here*' as opposed to '*that, there*' using the help of animals.

So let's take a look at some of them:



# Animals:

Animals can be found *here* and *there*!

But first let's look at some different **types** of animals and **where** to find them.



## In the house:



D\_g



Ca\_



Ham\_ter



Pa\_\_ot



Ra\_\_it

Let's fill in the gaps!

We call these animals – **pets**

In the city:



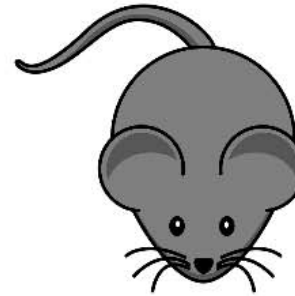
R\_t



Pi\_geon



Fo\_



Mo\_se



Cockr\_ach

We call these animals- **pests**

## On the farm:



Sh\_\_p



Co\_



H\_rse



\_ig

We call these- **farm animals**



## In the countryside:



B\_\_r



Eag\_e



H\_re



Squi\_\_el



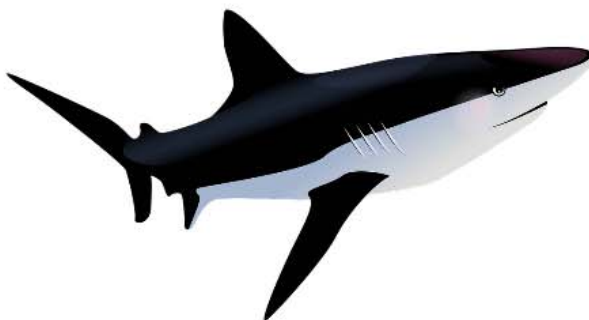
Ba\_ger

We call these animals- **wild animals**

## In the water:



Wh\_le



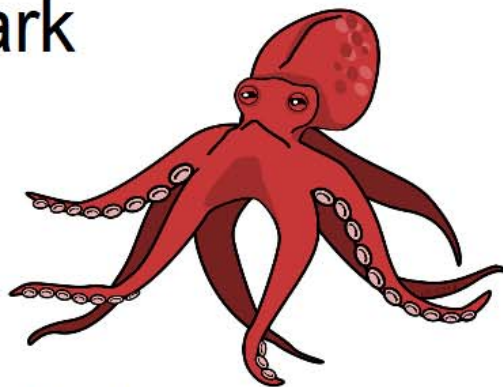
S\_ark



Fis\_



S\_al



Octo\_us

We call these animals – **marine life**

## Using *this* and *these*?

We use **this** for singular objects.



And **these** for the plural





**This** and **these** are used as pronouns:

1) When people or things are near us:

**This** chocolate is delicious.



**This** is fun!



**These** drawings are beautiful.



## 2) To introduce:



**This** is Daniel.

**Do not say:**

These are Mike and Jenny.

**Say:**

**This** is Mike and **this** is Jenny.

Introduce them separately if you use **this**, remember **'this'** is used for singular objects.



**These** are my cats, Mike and Jenny.



**3) To *introduce ourselves*:**



**This is Oliver speaking.....**

# This, these, that, those with nouns:

Nouns are words that are the names of people or objects.

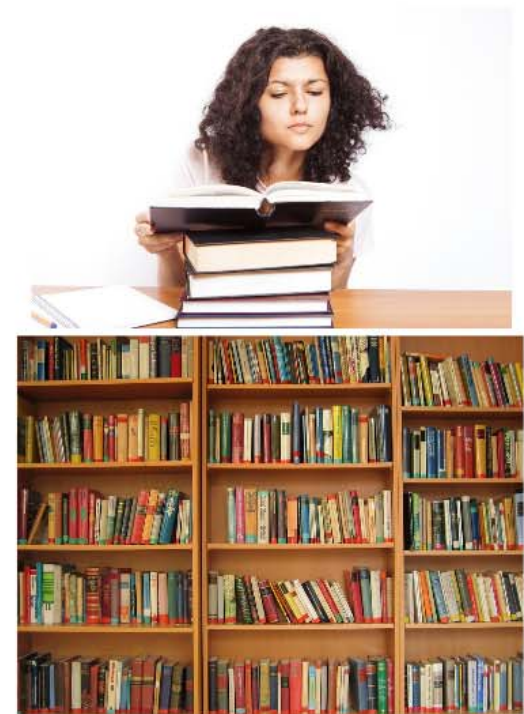
So as you know we use **this**, **these**, **that** and **those** to show proximity.

This is the same with nouns:

1) We use **this** and **these** for people or things near us:

This is my favourite book.

These are all my books.





2) ***That*** and ***those*** are used for people or things that are not near us:

What is that noise?



Who is making all those noises?



**So let's use what we have learnt with the animals from before:**

**Where?**

Now we can see the connection between **'this, here'** as opposed to **'that, there'**.



**This dog is here.**



**That dog is there.**



**These cows are here.**

**Those cows are there.**

