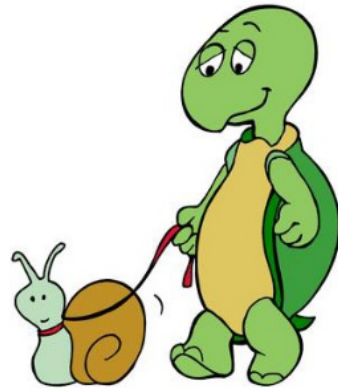


Adverbs

Hello and welcome back, in this lesson we will be exploring 'adverbs'.

We will find out what they are and how to use them.

Don't worry! We will go '**slowly**'.



What does it do?

Adverbs modify a verb, an adjective, or another adverb.

Adverbs normally carry out these functions by answering questions such as:

When?



She arrives **early**.

How?



He drives **dangerously**.

Where?



They go everywhere **alone**.

In what way? To what extent?



He eats **quickly**.



It is **terribly** hot.

Verbs

An adverb is used to tell more about the verb in the sentence.

What is a Verb?

A verb shows an action or a state of being.

Here are some examples:

Run



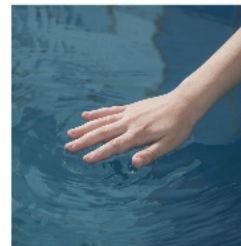
Sleep



Smell



Feel



Play



Watch



Let's use these in a sentence:

I **run** to school.

I **feel** good.

I **sleep** at night.

I **play** football.

I **smell** flowers.

I **watch** television.

These are all the actions within the sentence.

The adverb adds detail to the verb.

I run to school **quickly**.



I sleep at night **silently**.



I play football **intensely**.



Adjectives

An adverb is used to tell more about an adjective in the sentence.

What is an adjective?

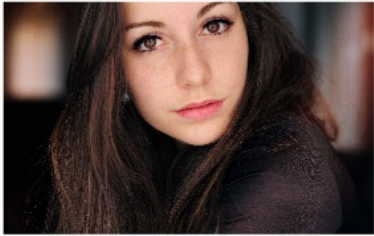
Adjectives are words that describe or modify nouns and these descriptive words can describe:

size, age, beauty, temperature, origin etc.

basically anyway of describing a person or object.

Examples of adjectives:

A **pretty** girl



Beautiful flowers



Warm soup



A **big** cup of tea.



Blue socks



The adverb adds detail to the adjective.

A **very** pretty girl



Extremely beautiful flowers



Really warm soup



An **overly** big cup of tea.



Deeply blue socks



Adverbs

An adverb is used to tell more about an adverb in the sentence.

Examples:

It rains **very hard**.

I run **much faster** than you.

I **less frequently** eat chocolate.

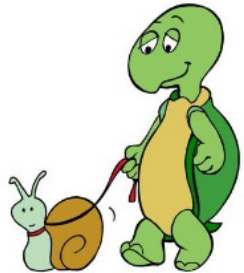
Rules:

Adverbs are normally adjectives that are changed by adding 'ly'.

Adjective + (ly) = Adverb(ly)

Examples:

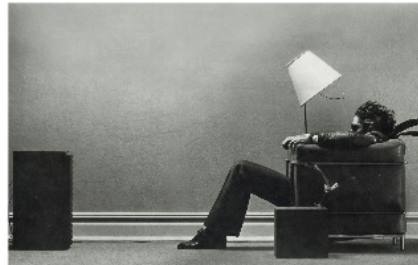
slow – slowly



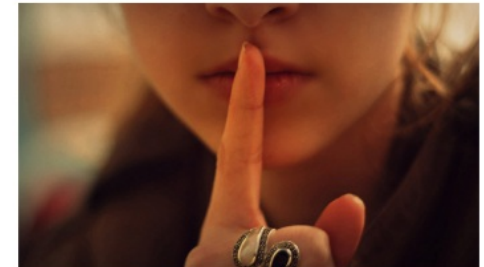
quick – quickly



loud – loudly



quiet – quietly



If an adjective ends in 'y' then to change it into an adverb,
swap the 'y' to 'i' and add 'ly'.

Adjective(y) + (ly) = Adverb(i)(ly)

happy – happily



easy – easily

